



NORI-D's Social Impact Assessment Scoping Report and Terms of Reference, Seeking Input during ISA's 28th Session

Mehrdad Nazari &
Allison Rippin Armstrong
Prizma LLC –
28 March 2023
during ISA, Kingston

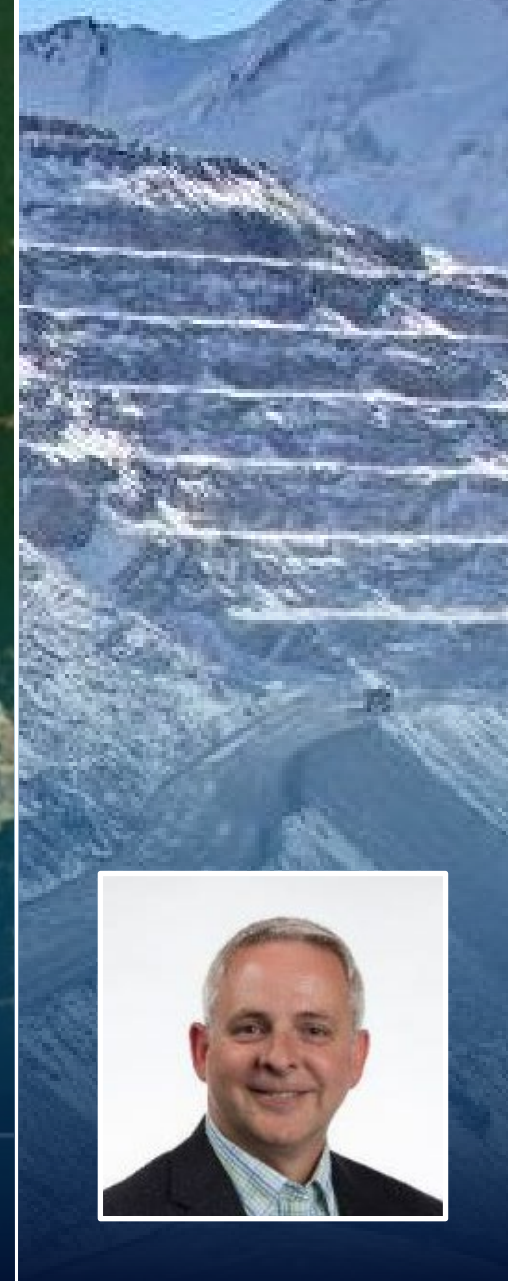
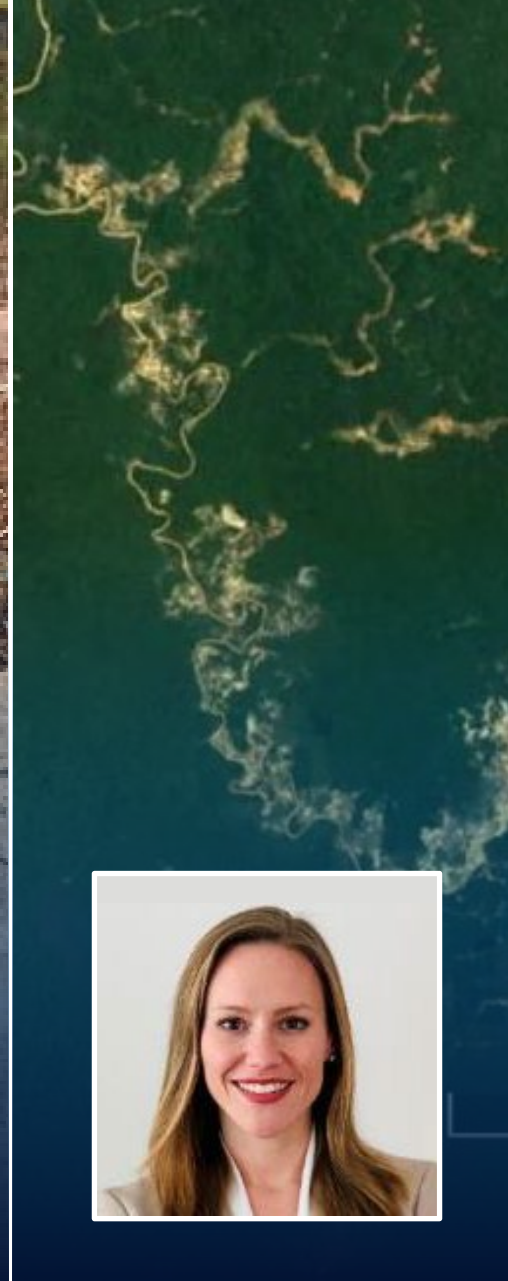
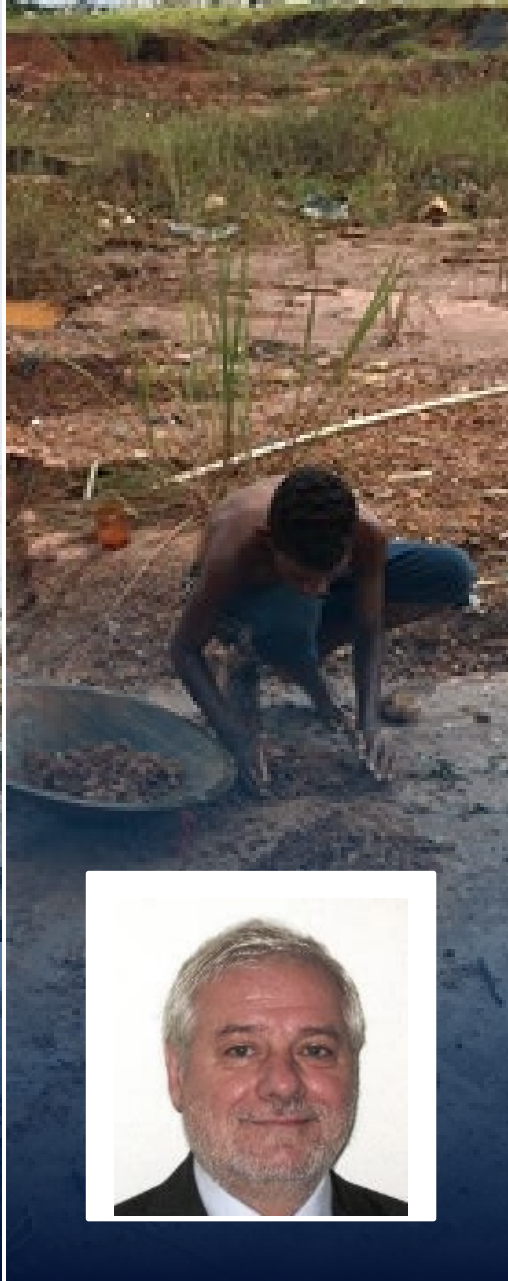
Slides annotated to include results from mentimeter surveys

Agenda

- Introduction
- Why Social Impact Assessment (SIA)
- Comments received
- Terms of Reference for SIA
- Inputs we are looking for
 - Gaps in the TOR, defining social zone of influence
 - Who/how/why to engage for NORI-D's SIA
 - Additional priority Valued Social Components
 - What/how to integrated traditional knowledge



Scoping Report and
Engagement Record for the
Social Impact Assessment for
the NORI-D Nodule Collection
Project

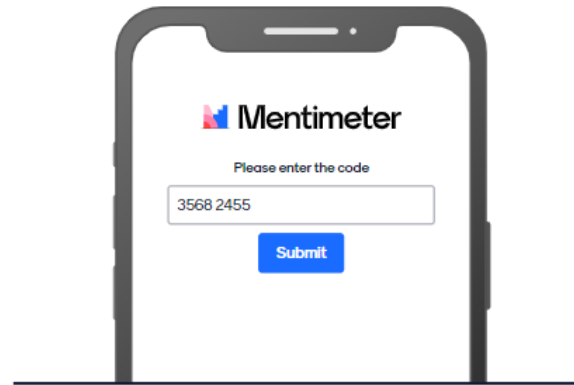


Prizma's team members for NORI-D Social Impact Assessment

Mentimeter

- Go to [menti.com](https://www.menti.com) via website/code or QR code
- No account needed
- Keep [menti.com](https://www.menti.com) open as we will have questions throughout the presentation
- Share your feedback with us and see live polling rolls – hit “submit” after each Q
- **Polling is anonymous**

Go to
www.menti.com

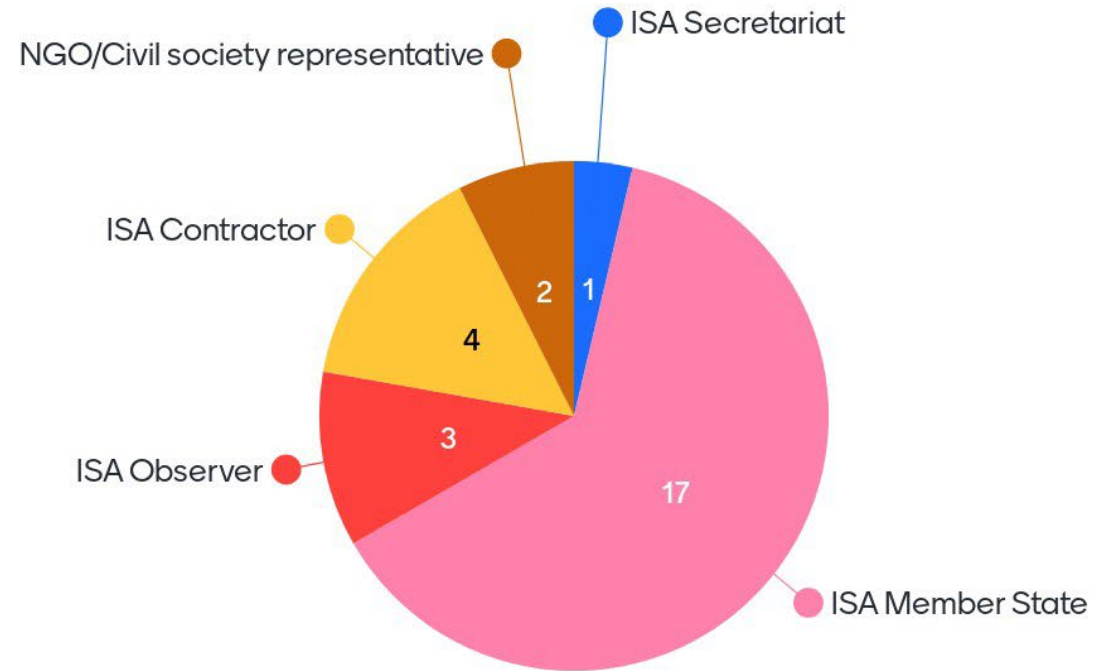


Enter the code
3568 2455

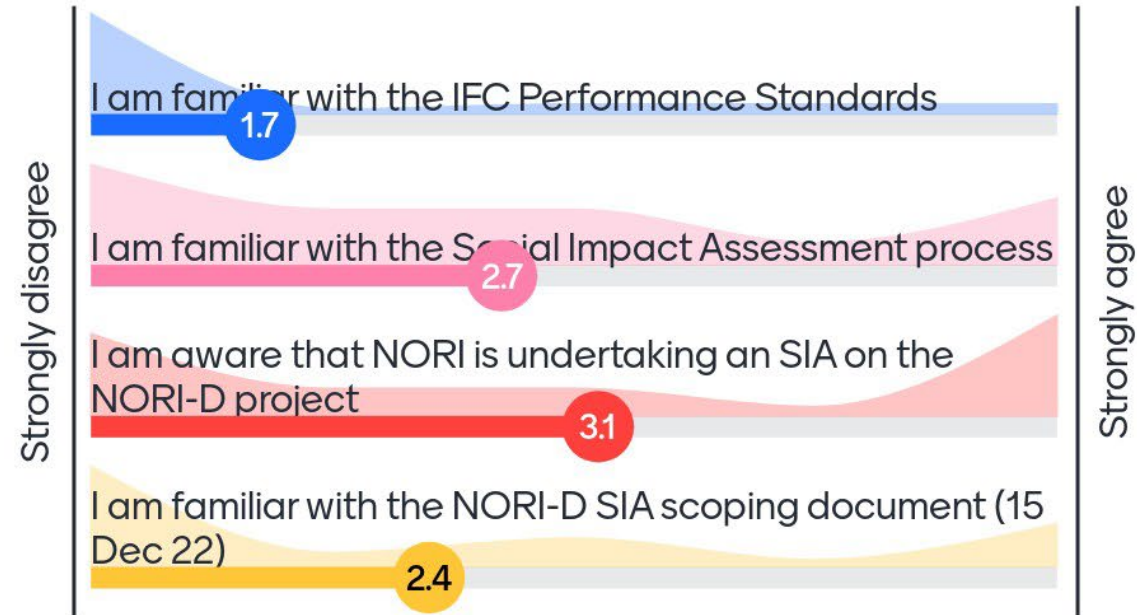


Or use QR code

Who is with us today?



How familiar are you with today's topic?



Why there is a need for a Social Impact Assessment?

- SIA → helps with informed decision making
- SIA is required by the ISA (example: ISBA/28/C/IWG/ENV/CRP.1)
 - Draft ISA regulatory regime, EIS templates:
 - Description of the existing socio-econ-cultural baseline
 - Assess impacts on the socio-econ-cultural components, mitigation
 - International Finance Corporation (IFC) Performance Standards (PS), Equator Principles

Social Impact Assessment (SIA) includes the processes of analysing, monitoring and managing the intended and unintended social consequences, both **positive and negative**, of planned interventions (policies, programs, plans, projects) and any **social change processes invoked by those interventions**. Its primary purpose is to bring about a more sustainable and equitable biophysical and human environment. [IAIA]

Approach for NORI-D's SIA: Draft ISA regulations, Good International Industry Practice → Scoping and engagement

ISBA/27/CIWG/ENV/CRP.1
12 March 2023

Twenty-eighth session
Council session, part I
Kingston, 16-31 March 2023
Item 10 of the provisional agenda of the Council
Draft regulations on exploitation of mineral resources in the Area

Draft regulations on exploitation of mineral resources in the Area

Parts IV and VI and related Annexes

Prepared by the Facilitator, Ms. Rajesh Tega (Fiji), of the Informal Working Group on the protection and preservation of the marine environment

- The present document contains my further revised draft text for Parts IV and VI and related annexes of the draft regulations on exploitation of mineral resources in the Area.
- The structure of the facilitator's further revised text is as follows:
 - Part IV: Protection and preservation of the Marine Environment;
 - Part VI: Closure plans;
 - Annex IV: Environmental Impact Statement;
 - Annex IV bis (previously III bis) Scoping Report;
 - Annex VII: Environmental Management and Monitoring Plan;
 - Annex VIII: Closure Plan;
 - Annex X: Design criteria for Impact Reference Zones (IRZs) and Preservation Reference Zones (PRZs) (as proposed in November 2022);
 - Schedule: Use of terms and scope.
- The further revised text is presented as a revision of the facilitator's original text (ISBA/27/CIWG/ENV/CRP.1) that was revised before the second part of the twenty seventh session in July 2022 (ISBA/27/CIWG/ENV/CRP.1:Rev.1). It has been amended in accordance with the comments made by delegations and observers in July 2022 (regulations 44-55) and November 2022 (regulations 56-61 and relevant annexes), as well as the written proposals submitted by delegations and observers between sessions. New amendments are reflected in mark-up text, whilst previously marked-up text has been accepted to the extent that I have not heard any objection to the content or where there has been a clear consensus as to the content.
- In further revising the text I have used the same approach as previously used, that is:
 - Only those proposals in respect of which there has been an express opposition are reflected in the text. This is without prejudice to their future consideration or the

1

**IFC Performance Standards on
Environmental and Social Sustainability**

Effective January 1, 2012

**IFC International
Finance Corporation**
World Bank Group

IAIA International Association for Impact Assessment

**Social Impact Assessment:
Guidance for assessing
and managing the social
impacts of projects**

Principal author:
Frank Vanclay, University of Groningen

Contributing authors:
Ana Maria Esteves, Community Insights Group
Isa Aucamp, Equipactives Research & Consulting Services
Daniel M. Franks, University of Queensland

April 2015

NORI
PRIZMA

**SCOPING DOCUMENT FOR A
SOCIAL IMPACT
ASSESSMENT FOR THE NORI-
D POLYMETALLIC NODULE
COLLECTION PROJECT**

Prepared by Neary Ocean Resources Inc. by Prizma LLC
Effective Date: September 8, 2022
Draft Version: December 12, 2022

NORI-D Polymetallic Nodule Collection Project

Stakeholder Feedback Form for NORI-D Social Impact Assessment Scoping

Instructions: Fill out and email as word or pdf attachment to [norid@norid.com.au](mailto:nori@norid.com.au) with subject "NORI-D SIA scoping consultation". An online version of this survey also is filed out and account [here](#).

Contact Information	
Last Name	Initial
E-mail Address	Phone
Area of Organization	City, State/Province, Country
Area of Involvement	Company Group / NGO
Country	Phone
Event Contact Details	Web Site / Email Address
Project and Assessment Title	
Please sign off if you do not have administrative authority or responsibility (see below) could be significantly affected by the Project	

- Environmental impacts from deep sea mining will have significant social, cultural, and economic impacts as outlined in our concerns below.
- While this report and the concerns outlined below are primarily about the impacts from the harvesting/mining of nodules in the deep sea, the shipment to and processing of nodules on land will have a different set of societal impacts. Details about how the nodules will be processed on land should be outlined in greater clarity in order to have a fuller understanding of the life cycle of the project.
- The occurrence of seabird nesting on risk sections, as outlined below. Some of the seabirds nest from the lack of resources on the present regime that the SIA will require upon construction, but a lack of clarity on resource amount for deep-sea mining, and the required criteria for the SIA and its likelihood suggests further analysis would be helpful.
- The SIA is postponed by years to develop the rules and regulations to govern deep sea mining. If the Project goes ahead before SIA, another States have been able to adapt the regulatory regime, it would severely damage the legitimacy of the SIA, as an institution and regulator of the industry.

Please sign off if you do not have administrative authority or responsibility (see below) could be significantly affected by the Project

The completion of material resources of the seabed are intended to be for the Common Heritage of the Mankind, so should deliver benefits across the world and across generations. Whether this is a laudable aim, it remains unclear the extent that the project will be able to deliver this.

General Comments

Assessment of Environmental Impacts

The scoping document currently underpinned the environmental impact that deep sea mining could have. Although this is not an SIA, environmental impacts have significant social implications. Clarifying the deep sea would support the cultural values or resources values held by people around the world. Unaddressed discharge as the sea water release could have economic impacts to fisheries. It is also important to represent the environmental impacts in as explicit and clear way. A few places where environmental impacts could be better addressed:

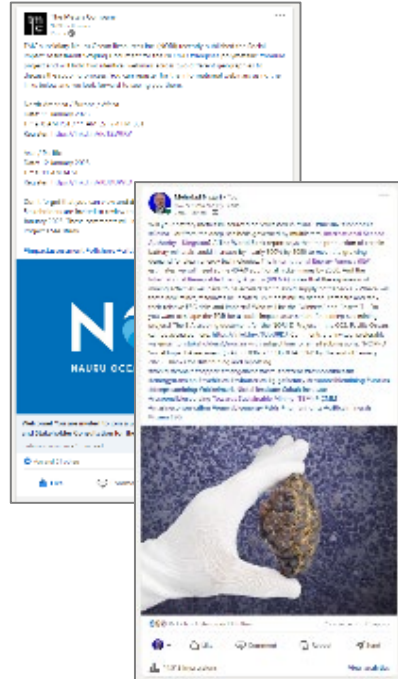
- Characteristics of CCZ, and its boundaries

Scoping Report - includes Terms of Reference (ToR) for SIA (published 23 Mar 2023)

Scoping Document 15 Dec 2022



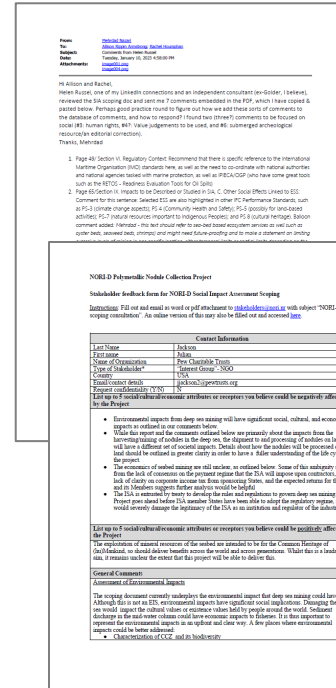
Notification >20k views



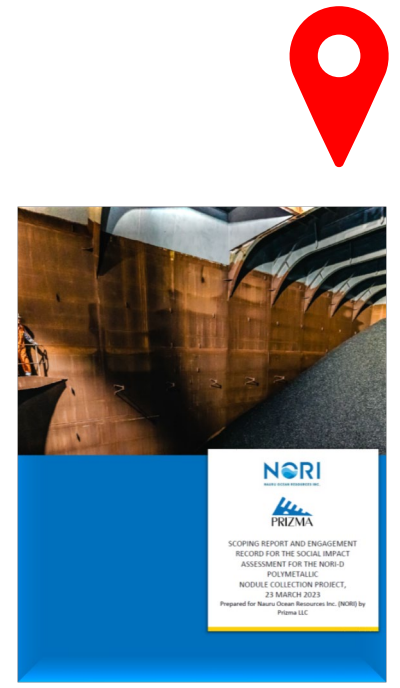
Webinars > 125 part. Seminars 12 part.



7 Submissions, 238 comments

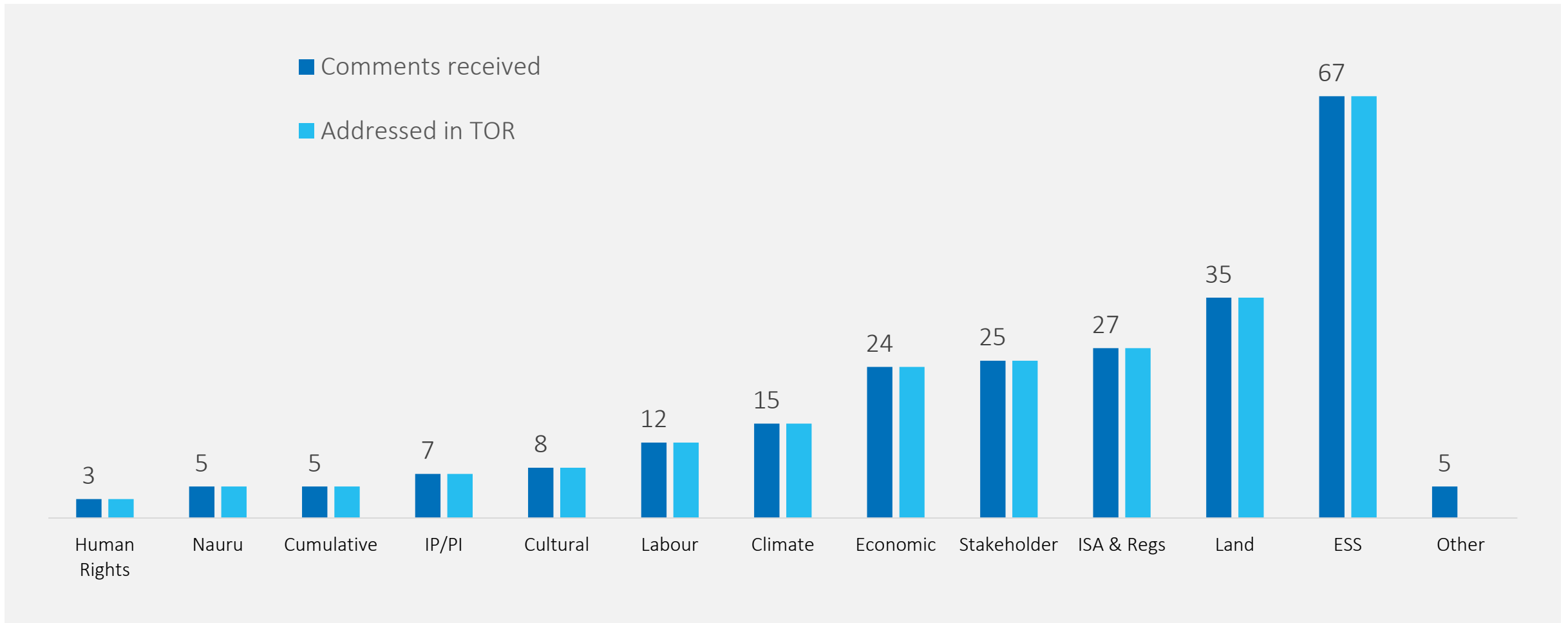


Scoping Report & TOR for SIA



7 Written Submissions, 238 Comments, 98% in Terms of Reference

NORI & Prizma planning visit to Nauru and Fiji over next few months



Output from SIA scoping: Terms of Reference

Invitation to review and continue
to provide feedback

- | | |
|-------------------------------------|---------------------------------------|
| A. Objectives | I. Mitigation Measures |
| B. Regulatory Framework | J. Residual Effects |
| C. Project Overview | K. Consultation and
Engagement |
| D. Feasible Alternatives | L. SIA Study Team |
| E. SIA Methodology | M. Conclusions and
Recommendations |
| F. Baseline Studies | N. References |
| G. Potential Aspects and
Impacts | O. Annexes |
| H. Cumulative Impacts | |

<https://metals.co/wp-content/uploads/2023/03/NORI-D-SIA-Scoping-Report-and-Engagement-Record-Combined-20230323.pdf>



Terms of Reference for the NORI-D SIA

Topic from Scoping Comments - How are Pacific Islanders and Indigenous Peoples currently involved in ISA & ocean governance?

01

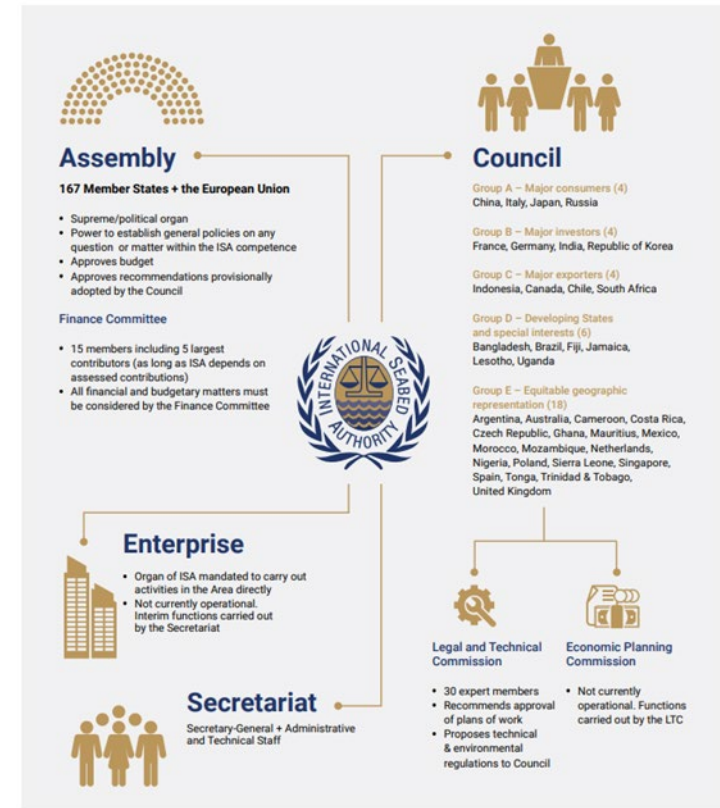
Pacific Islanders involved in ISA

- Voting ISA State Members
- Some Sponsors, not monolithic
- ISA Observers

02

Engagement opportunities

- NORI: all interested parties = stakeholders
- ISA's organs & processes
- Observers, advocacy groups



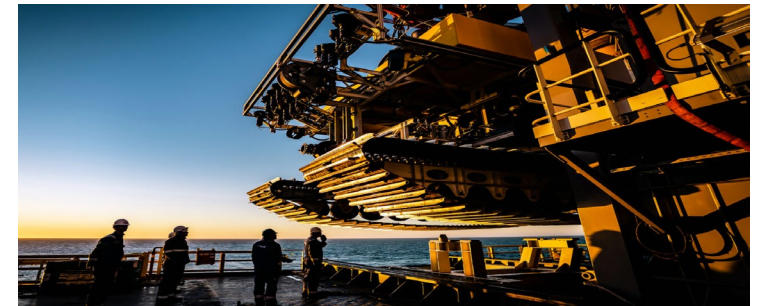
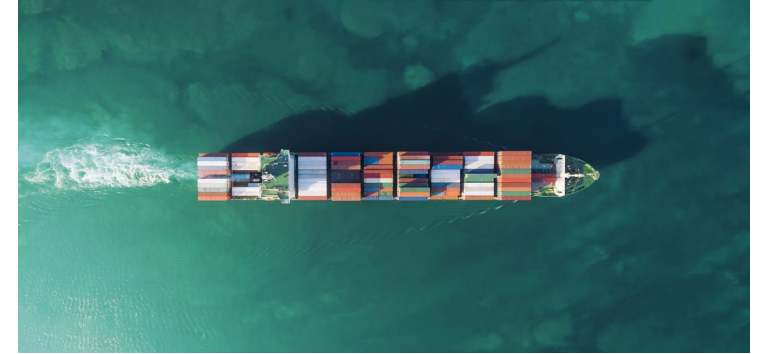
How should *affected communities* be determined? What are *zones of influence* (and boundaries)?

- NORI: all interested parties are stakeholders
 - Engagement/access not limited by impact or being affected
 - Added in-person engagement:
 - ISA (stakeholder nexus for deep sea mining)
 - Republic of Nauru (Sponsoring State),
 - Fiji (hub for Pacific Small Islands Developing States related institutions and developing partners)
- SIA to focus on NORI-D Project
- EIA to help determine zones of influence
 - Need to add socio-cultural and socio-economic overlay
- Integrate Traditional Knowledge
- Continue to engage

Key valued social components (so far)

VSC = Sensitive or valued *receptors* of Project impacts

- A. Ecosystem Services
- B. Biodiversity
- C. Genetic resources, biomaterials
- D. Climate Change
- E. GHG emissions
- F. Resource intensity
- G. Migratory marine species
- H. Pacific Islands Culture
- I. Traditional Knowledge
- J. Common Heritage of Humankind
- K. Underwater Cultural Heritage
- L. Gender
- M. Labour, Safety
- N. Fishing
- O. Tourism
- P. Marine Traffic
- Q. Security
- R. Benefit Sharing (Nauru, ISA, Tax)
- S. Employment
- T. Education & training
- U. Marine Scientific Research
- V. Dev. States Land-based Producers
- W. Volume, pricing metals (nodules)
- X. Product Stewardship
- Y. Emergency Response Planning
- Z. Other uses of NORI-D area



Mentimeter survey: Prioritize VSCs for NORI-D Project, identify others (see next slide for results)

- Ecosystem Services Biodiversity
- Genetic resources, biomaterials
- Climate Change
- GHG emissions
- Resource intensity
- Migratory marine species
- Pacific Islands Culture
- Traditional Knowledge
- Common Heritage of Humankind
- Underwater Cultural Heritage
- Gender
- Labour, Safety
- Fishing
- Tourism
- Marine Traffic
- Security
- Benefit Sharing (Nauru, ISA, Tax)
- Employment
- Education & training
- Marine Scientific Research
- Dev. States Land-based Producers
- Volume, pricing metals (nodules)
- Product Stewardship
- Emergency Response Planning
- Other uses of NORI-D area

Traditional & local knowledge (examples*)

Q: Other questions/topics, baselines and connections?

Possible Questions

Baseline conditions

Connect to NORI-D

What adversely affects fishing and livelihoods?

Ignoring traditions, taboos, competition with industrial fishing, pollution, climate

EIA (for example, effect from sediment plumes), cumulative impacts

What drives erosion of local culture?

Colonization, depopulation (diseases), globalization, breakdown of traditional livelihoods (poverty), tourism, capture and pass on knowledge, sea-level rise

Respecting, celebrating and helping passing on culture, support efforts to strengthen it (such as recording)

What is the role of women and what are barriers?

Fisherfolks: traditional roles, largely excluded from governance

Gender-sensitive capacity building, scholarships, hiring, governance

*Examples developed after reviewing selected videos posted on One Ocean Hub's Youtube Channel

Continue to engage with stakeholders on NORI-D's SIA

ISA (28-30 Mar)	Nauru (24-28 April)	Fiji (TBC)	Others (knowledge holders)	IAIA Malaysia (8-11 May)	?
<ul style="list-style-type: none">• This event• Prizma available for meetings	<ul style="list-style-type: none">• Open house• Youth, women, fishing• Government officials, Nauru Seabed Mineral Authority, Churches	<ul style="list-style-type: none">• Secretariat of Pacific Islands Forum• Secretariat of Pacific Community• Universities• Churches, civil society• Asian Develop. Bank	<ul style="list-style-type: none">• Fisheries, cables, shipping• Underwater cultural heritage	<ul style="list-style-type: none">• Presenting progress during <i>The Role of EIA in Deep Sea Mining</i> paper session• Side event	<ul style="list-style-type: none">• <i>Q: Who is missing?</i>



Contacts: stakeholders@nori.nr, mehrdad@prizmasolutions.com, allison@prizmasolutions.com

Mentimeter survey: Who are other stakeholders to consider prioritizing for NORI-D (list up to 5, results next slide)

Guide:

Think about the
NORI-D project
specifically

Try to be specific:
i.e. specific
jurisdictions,
organizations, etc.

Who are other stakeholders to consider prioritizing for NORI-D (list up to 5)



Mentimeter survey: What other engagement methods should the NORI-D project consider (list up to 3, results next page)

What other engagement methods should the NORI-D project consider (list up to 3)

fisheries department webinar
in person childrens
local communities
other un entities youth
side events industry ngos fisheries
coastal states un women
development partners
traditional leaders

Summary and next steps

- Presentation
 - Update on NORI-D SIA process and outcomes to date
 - SIA scoping, Terms of Reference generated, more engagements planned
- Questions
 - Gaps in the TOR, Priority Valued Social Components
 - Defining social zone of influence for NORI-D
 - Who, why, and how to engage for NORI-D's SIA
 - How to further integrate traditional knowledge
- We want to hear from you
 - Prizma team available for meetings and discussions



Scoping Report and Engagement Record for the
Social Impact Assessment for the NORI-D
Nodule Collection Project



Thank You.

Mehrdad Nazari &
Allison Rippin Armstrong
Prizma LLC

Contacts: stakeholders@nori.nr, mehrdad@prizmasolutions.com, allison@prizmasolutions.com